

# Mainsail: 6000429-Santana20 Main-1.des

## Design Info

=====

Initial Design Date: 24/6/2022

Boat:

Santana 20

Client:

## Design File:

F:\Dropbox\Dropbox\Fareast Sails\2022 Order\Need confirm order\6000429 Alejandra\6000429-Santana20 Main-1.des

Comments:

## Design Data

=====

### Main

#### Measurements

Luff geodesic:	7.400m
Leech geodesic:	7.692m
Foot geodesic:	2.100m
Head geodesic:	0.106m
Upper width (MUW):	0.478m
Three-quarter width (MTW):	0.846m
Half width (MHW):	1.413m
Quarter width (MQW):	1.815m
Foot median:	7.565m
ORC Mainsail area:	9.579m?
Surface area:	9.860m?
Clew height:	0.000m
Mast rake:	0.100m

### Battens

Position	Length	Roach	Angle	Luff	Leech	Full
80.000%	0.742m	0.161m	75.411?	5.918m	6.132m	Full
60.000%	1.239m	0.211m	75.411?	4.440m	4.599m	Full
40.000%	1.607m	0.182m	75.411?	2.962m	3.066m	Full
20.000%	1.889m	0.107m	75.411?	1.485m	1.533m	Full

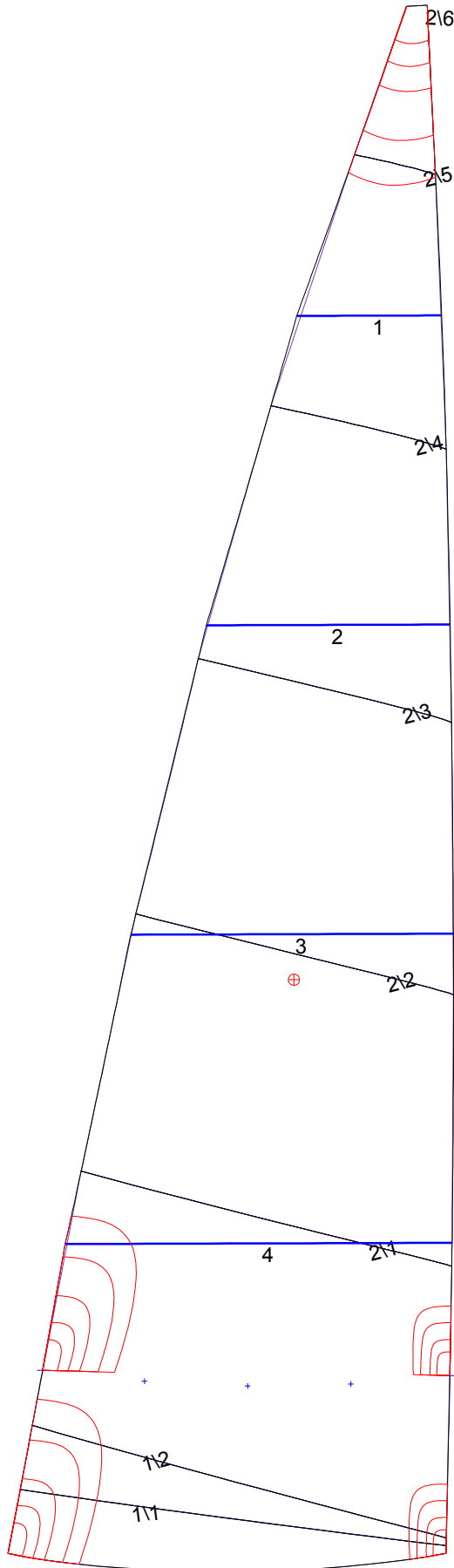
### Reefing Points

1, Luff: 0.850m ; Leech: 0.894m ; Offset: 0.000m ; Number Eyelets: 3

### Luff Curve

		Fanned Luff (@ 5.00% [0.105m])	Before BSeam
7.399m,	0.000m	100% (7.400m) :	0.000m
6.477m,	-0.035m	90% (6.660m) :	0.020m
5.549m,	-0.060m	80% (5.920m) :	0.039m
4.619m,	-0.072m	70% (5.180m) :	0.050m
3.700m,	-0.075m	60% (4.440m) :	0.055m
2.757m,	-0.069m	50% (3.700m) :	0.056m
1.850m,	-0.056m	40% (2.960m) :	0.053m
0.922m,	-0.031m	30% (2.220m) :	0.046m
0.000m,	0.000m	20% (1.480m) :	0.035m
		10% (0.740m) :	0.018m
		0% (0.000m) :	0.000m

# Mainsail: 6000429-Santana20 Main-1.des



## Seam Allowances

	Split	Radial	Cross
Zone: 1	0.025m	0.025m	0.025m
Zone: 2	0.025m	0.025m	0.025m

## Edge Excesses

	Luff	Leech	Foot
Sail:	0.000m	0.000m	0.000m

## Total Seam Lengths (m)

Horizontal	10.28
Radial/Vertical	0.00
Bi-Radial Split	0.00

## Materials

Material	Area (m <sup>2</sup> )	Panels
Material 1	9.84	1/1, 1/2, 2/1, 2/2, 2/3 2/4, 2/5, 2/6